

9. ROTARY VANE PUMPS

DuraVane Lubricated rotary vane pump RVL070H

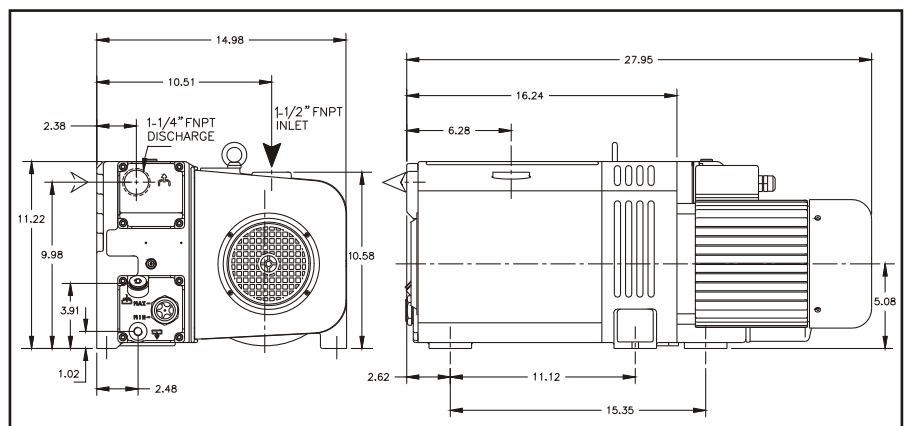
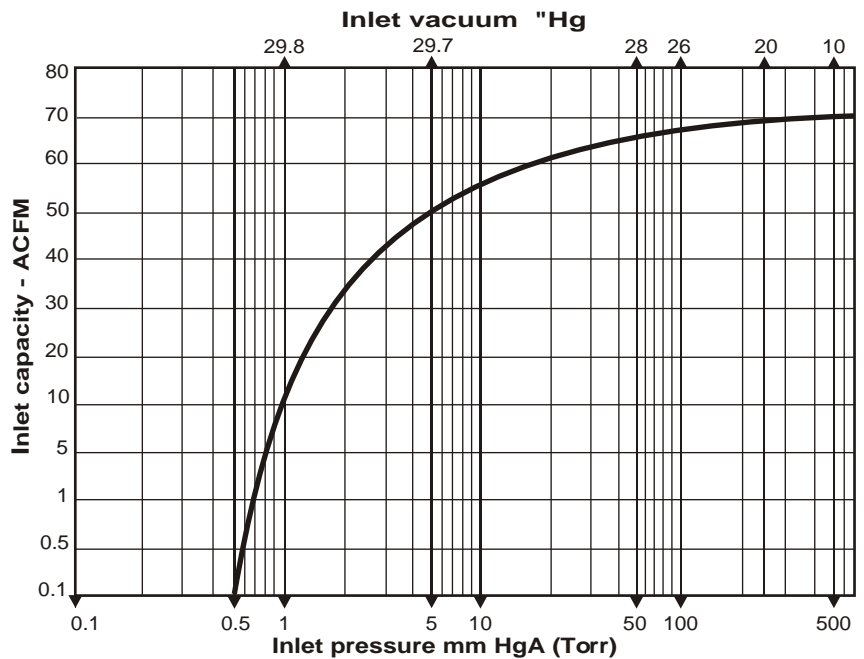
DuraVane lubricated rotary vane pumps are single-stage pumps with an integrated closed loop oil recirculation system.

- Heavy duty construction.
- Compact design, small footprint.
- High-tech vane material provides long vane life.
- Gas ballast valve is standard.
- Low noise level.
- Low maintenance.
- Air-cooled design.
- Internally mounted inlet check valve.
- High efficiency multi-stage exhaust filter removes 99.9% of exhaust smoke.
- Direct drive.
- Simple to install.



Performance characteristics	
Displacement:	70CFM
Final pressure:	0.5Torr
Motor:	4HP/60HzTEFC
Voltage:	208/230/460V/3phase
Speed:	1800RPM
Noise level(at 3ft):	72dBA
Oil reservoir cap.:	2.7qt
Oil type:	Duratex 100
Weight:	165Lbs
Inlet conn.:	1-1/2"NPT
Discharge conn.:	1-1/4"NPT

Performance curve: Based on 29.92 inch Hg barometric pressure.
RVL070H Inlet temperature 70° deg. F.



Information contained in this document is for reference only. Subject to change without notice.