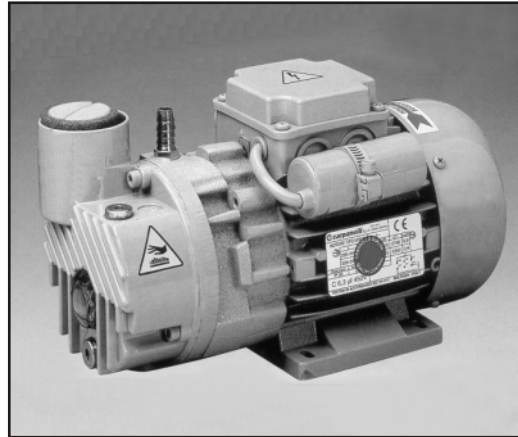


### DuraVane

Lubricated rotary vane pump  
RVL003H

**DuraVane** lubricated rotary vane pumps are single-stage pumps with an integrated closed loop oil recirculation system.

- Heavy duty construction.
- Compact design, small footprint.
- High-tech vane material provides long vane life.
- Gas ballast valve is standard.
- Low noise level.
- Low maintenance.
- Air-cooled design.
- High efficiency multi-stage exhaust filter removes 99.9% of exhaust smoke.
- Direct drive.
- Simple to install.

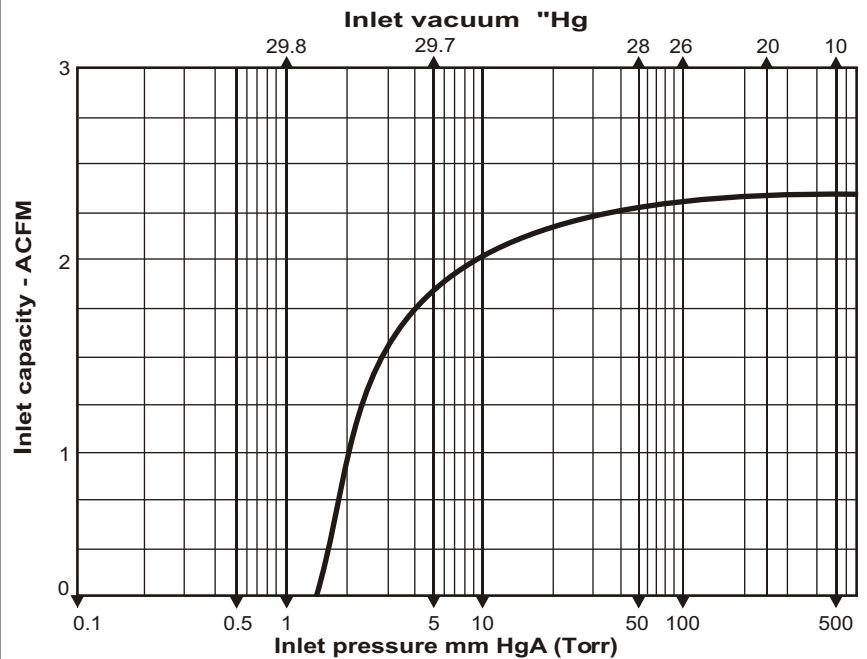


#### Performance characteristics

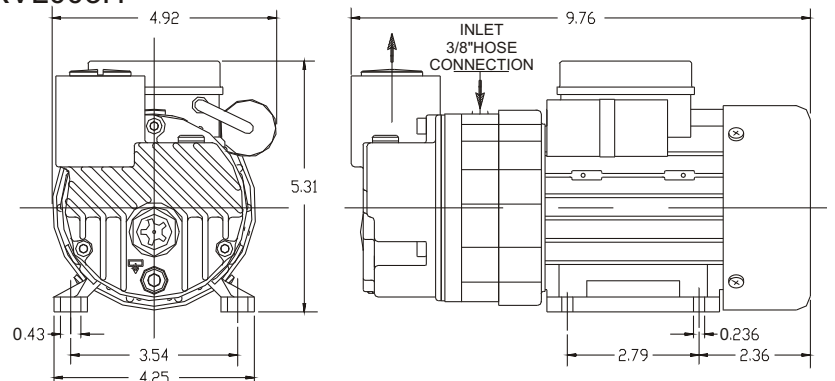
|                      |                |
|----------------------|----------------|
| Displacement:        | 2.6CFM         |
| Final pressure:      | 1.5Torr        |
| Motor:               | 0.2HP/60HzTEFC |
| Voltage:             | 110V/1phase    |
| Speed:               | 3400RPM        |
| Noise level(at 3ft): | 60dBA          |
| Oil reservoir cap.:  | 0.06qt         |
| Oil type:            | Duratex 32     |
| Weight:              | 12Lbs          |
| Inlet conn.:         | 3/8" hose      |
| Discharge conn.:     | -              |

RVL003H

Based on 29.92 inch Hg barometric pressure.  
Inlet temperature 70° deg. F.



RVL003H



Information contained in this document is for reference only. Subject to change without notice.