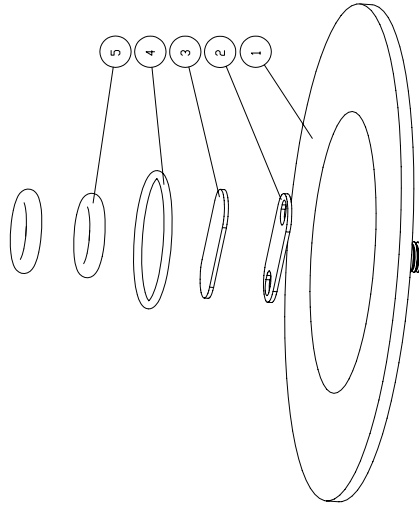


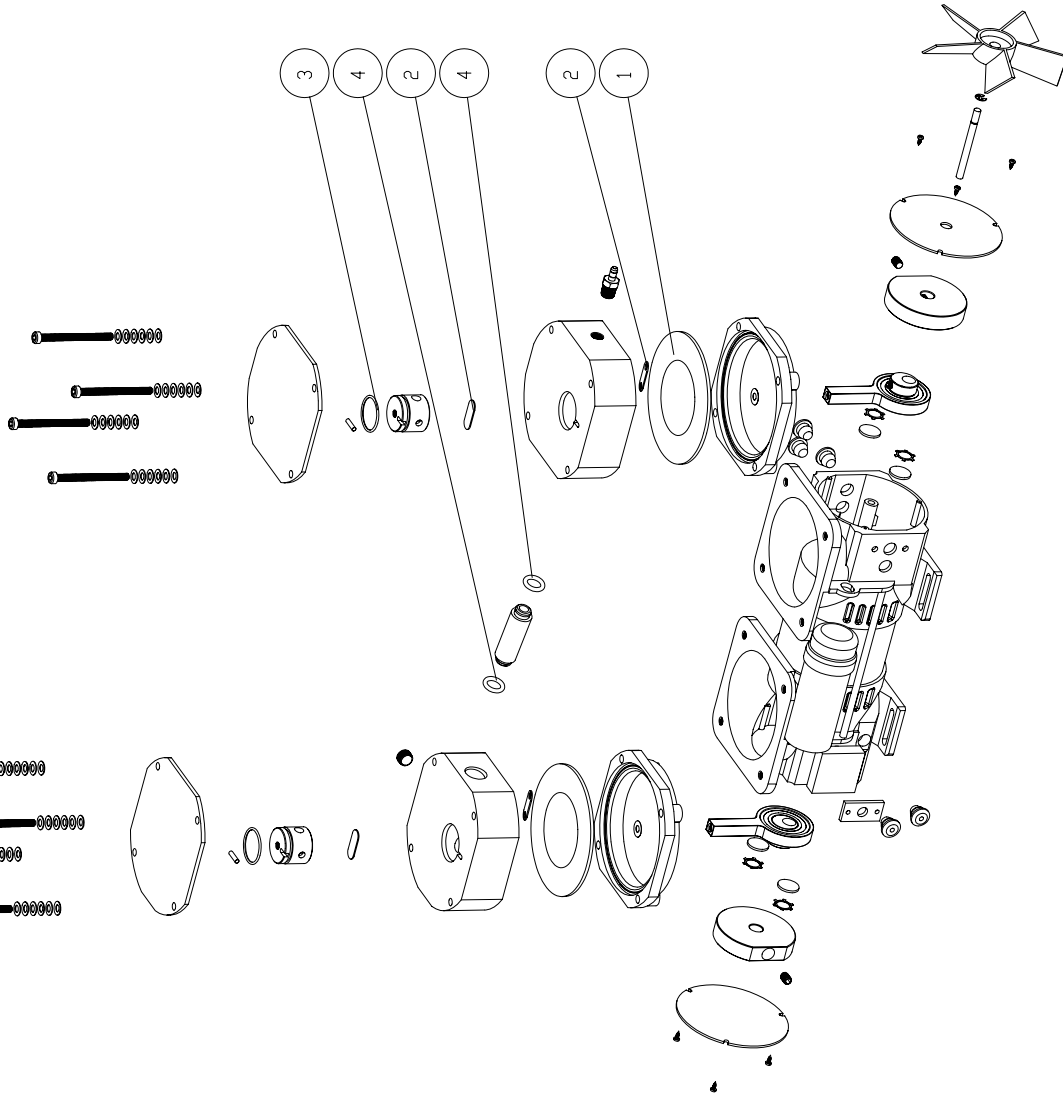
8.30 Exploded View and Kit for Model's 2032 , 2042 & 2047

REPAIR KIT 2047K-01



1	61-3059	1	DIAPHRAGM MOLD
2	61-3706	1	INTAKE VALVE
3	61-3706A	1	EXHAUST VALVE
4	66-0166	1	O-RING #021, FLUOROELASTOMER
5	66-0167	2	O-RING 10.5 x 3.0 VITON

NOTE:
ALL HEADSCREWS NEED TO BE
TIGHTEN WITH TORQUE SPECS:
13.00 - 13.50 INCH PER POUND



This Kit is a one Head Service Kit